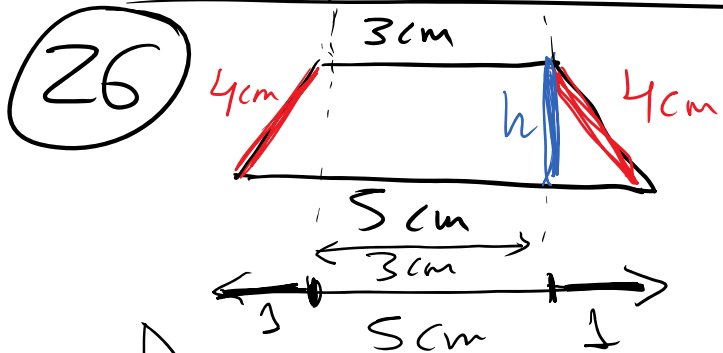


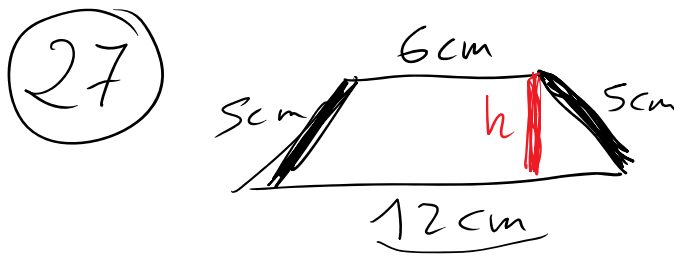
100 Id haciendo la autoevaluación (el enlace está en el correo) 28/05/20



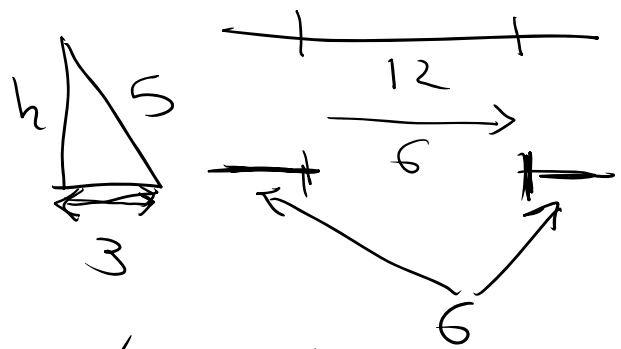
Perímetro =
 $= 5 + 4 + 3 + 4 =$
 $= \underline{16 \text{ cm}}$

$4^2 = 1^2 + h^2$
 $16 = 1 + h^2$
 $16 - 1 = h^2$
 $15 = h^2$
 $\sqrt{15} = h$
 $3,87 = h$

$\text{Área} = \frac{(B + b)h}{2} =$
 $= \frac{(5 + 3) \cdot 3,87}{2} =$
 $= \underline{15,48 \text{ cm}^2}$



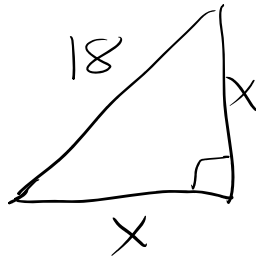
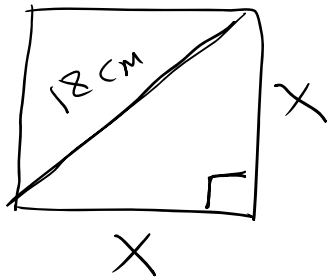
Perímetro = 28 cm
 $\frac{28 - 12 - 6}{2} = 5$



Teorema de Pitágoras
 $5^2 = 3^2 + h^2$
 $25 = 9 + h^2$
 $25 - 9 = h^2$
 $16 = h^2$
 $4 = \sqrt{16} = h$

$\text{Área} = \frac{(B + b)h}{2} =$
 $= \frac{(12 + 6) \cdot 4}{2} =$
 $= \underline{36 \text{ cm}^2}$

28



Teorema de Pitágoras

$$18^2 = \underbrace{x^2 + x^2}$$

$$324 = \underbrace{2x^2}$$

$$\frac{324}{2} = x^2$$

$$162 = x^2$$

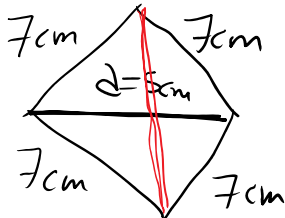
$$\sqrt{162} = x$$

$$12,73 = x$$

No hacen falta

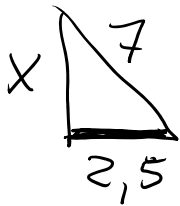
$$\begin{aligned} \text{Área} &= x^2 = 12,73^2 = \\ &= 162,05 \text{ cm}^2 \end{aligned}$$

29



¿P = ? ¿A = ?

$$\text{Perímetro} = 4 \cdot 7 = 28 \text{ cm}$$



$$7^2 = 2,5^2 + x^2 \leftarrow \text{Ecuación de 2º grado}$$

$$49 = 6,25 + x^2$$

$$49 - 6,25 = x^2$$

$$42,75 = x^2$$

$$\sqrt{42,75} = x$$

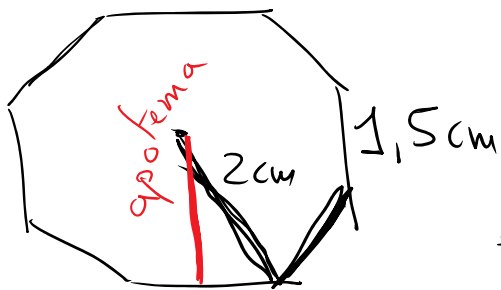
6,54 = x = la mitad de la diagonal mayor

$$D = 2 \cdot 6,54 = 13,08 \text{ cm}$$

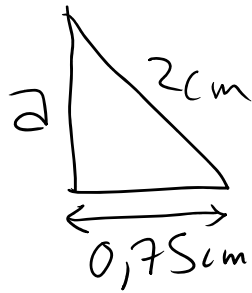
$$A = \frac{D \cdot d}{2} = \frac{13,08 \cdot 5}{2} = 32,7 \text{ cm}^2$$

37

Pág. 253



radio = 2 cm
lado = 1,5 cm



$$2^2 = 0,75^2 + a^2$$

$$4 = 0,56 + a^2$$

$$4 - 0,56 = a^2$$

$$3,44 = a^2$$

$$\sqrt{3,44} = a$$

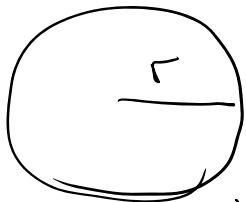
$$1,85 = a$$

$$A = \frac{P \cdot a}{2} =$$

$$= \frac{8 \cdot 1,5 \cdot 1,85}{2} = 11,1 \text{ cm}^2$$

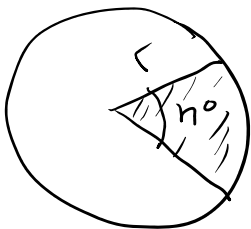
Página 254

Área del círculo



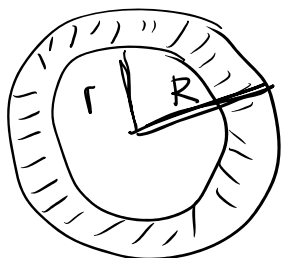
$$A = \pi \cdot r^2$$

Área del sector circular



$$A = \frac{\pi \cdot r^2 \cdot n^\circ}{360^\circ}$$

Área de la corona circular



$$A = \pi \cdot (R^2 - r^2)$$

Pág. 255 →

42

Radio

Área

50cm

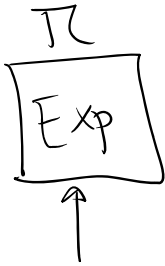
$$\pi \cdot 50^2 = 7853,98 \text{ cm}^2$$

7 km

$$\pi \cdot 7^2 = 153,94 \text{ km}^2$$

0,25 m

$$\pi \cdot 0,25^2 = 0,20 \text{ m}^2$$



Para hacer mañana viernes 29

Página 253 → 38, 39 y 40

Página 254 → 43

